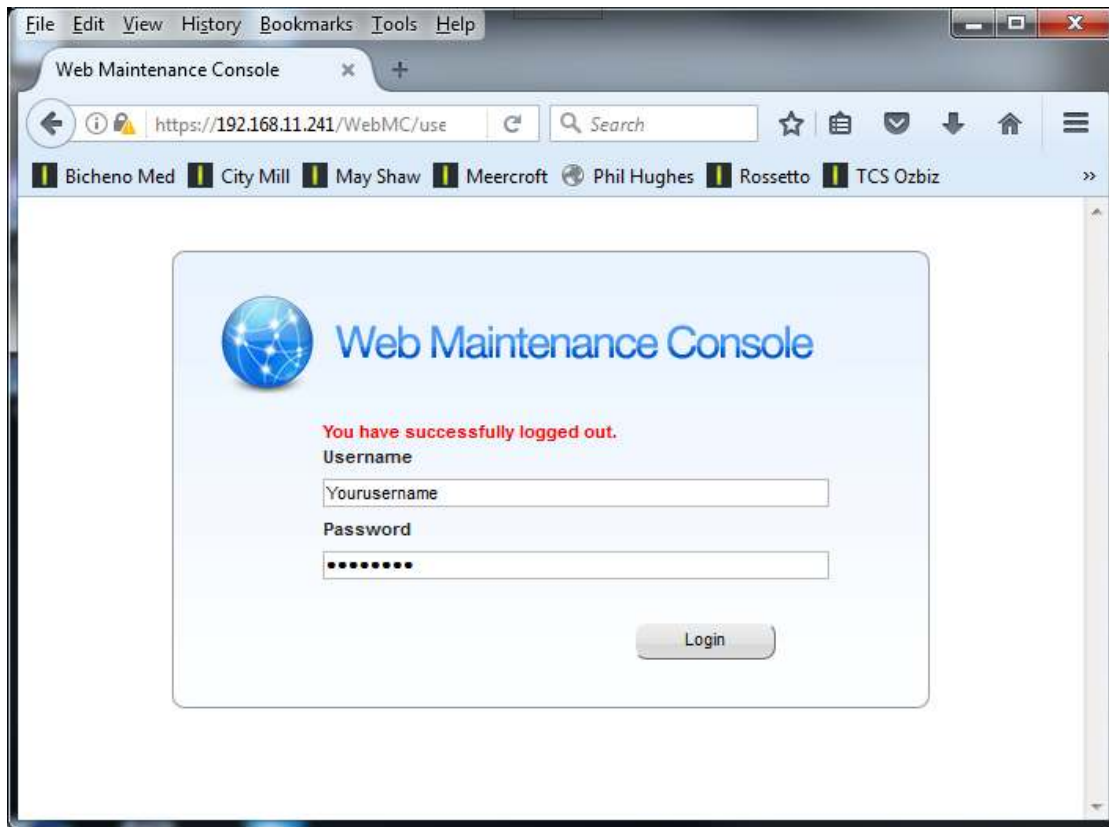
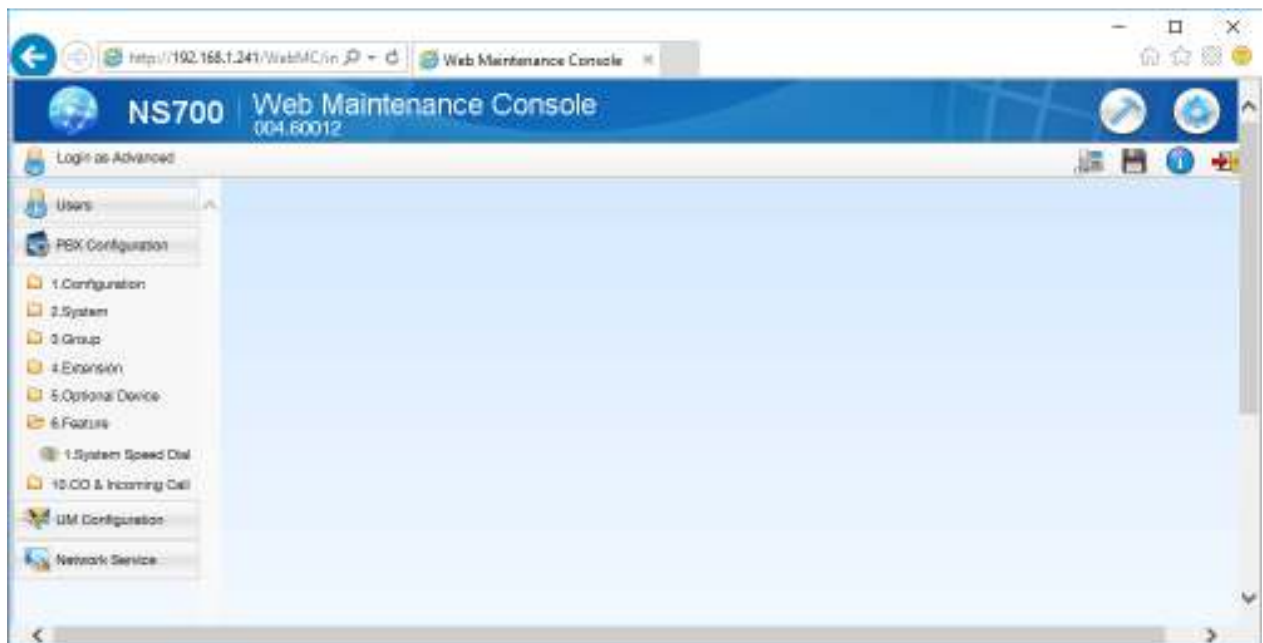


## Panasonic NS700 Admin Programming.

Connecting to PABX for programming Open up Internet explorer or similar browser and browse to your PABX IP e.g. 192.168.11.241. Enter user: Youruser Password: \*\*\*\*\* and Login

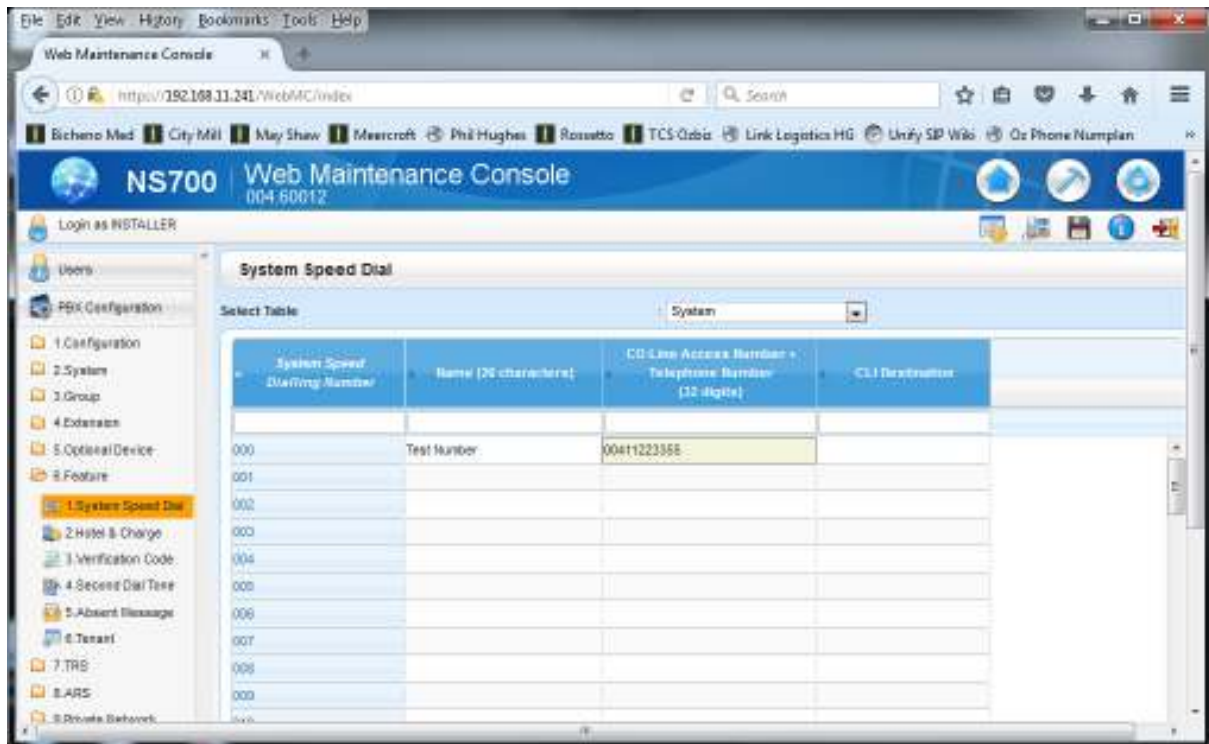


To change/add delete speed dials select PBX Configuration, 6. Feature, then System Speed dial.



Enter the name and number including 0 for outside line access as per the next screenshot.

Don't forget to Apply any changes made.

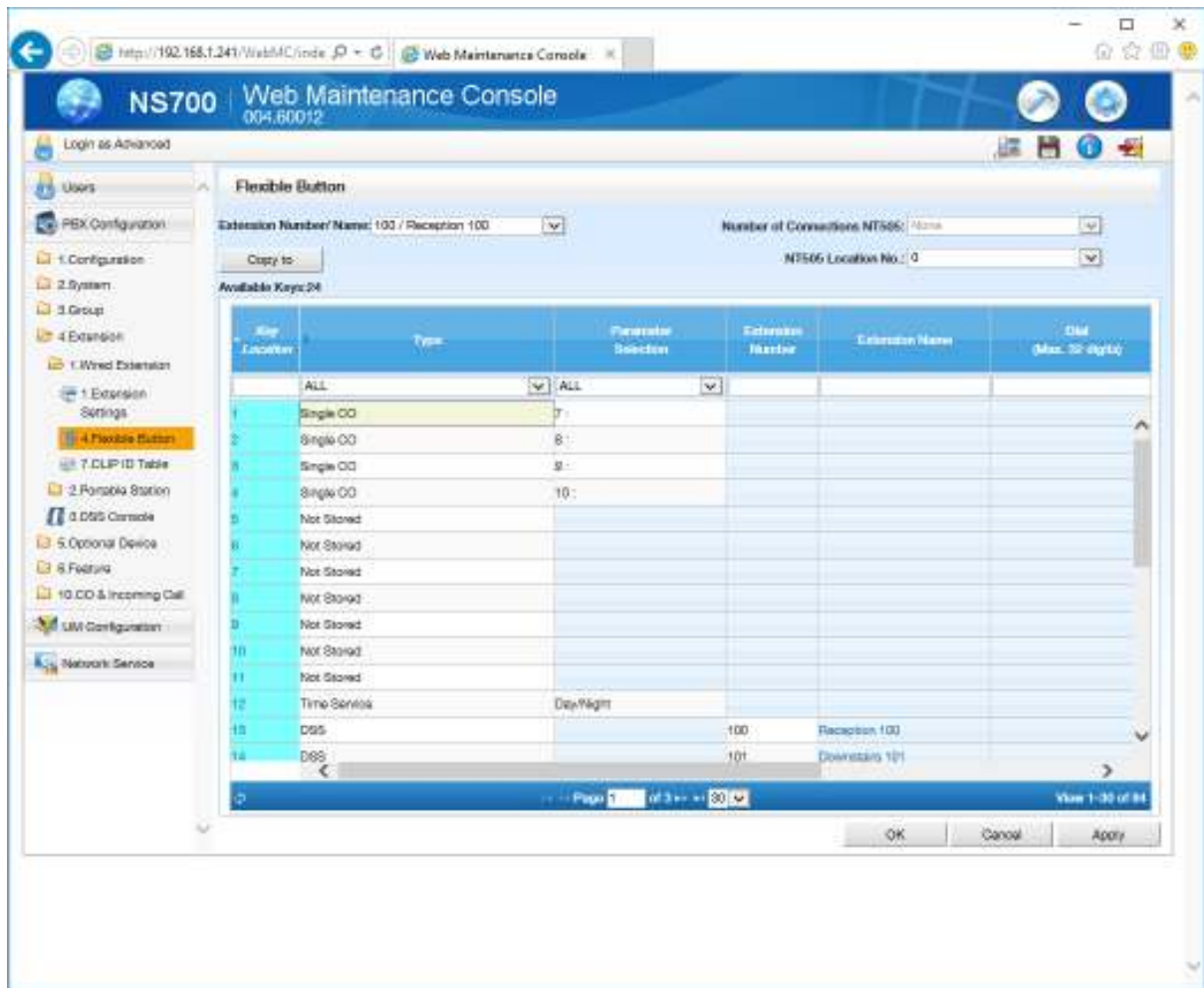


To modify Extension names or set up buttons select 4. Extension, 1. Wired Extension. From there you can modify the extension names and parameters and set up buttons.

The screenshot shows the NS700 Web Maintenance Console interface. The main content area is titled "Extension Settings" and contains a table of extension configurations. The table has the following columns: No., Extension Number, Extension Name, Mail, Fax, Port, Port Type, Telephone Type, and a final column with a value of 1. The table lists 14 extensions, including Reception 100, Downstairs 101, Cordless, Fax, ALARM???, EPTRGS???, Nelson 102, Cameron 103, Simon 104, Kitchen 105, Bench 106, and Nick 107. The left-hand navigation menu is open, and "4 Flexible Button" is selected. The top navigation bar includes "Copy to" and "CLIP Generate" buttons.

No.	Extension Number	Extension Name (D5 character)	Mail	Fax	Port	Port Type	Telephone Type	
						ALL	ALL	ALL
1	100	Reception 100	1	1	1	DPT	DPT (AD)	1
2	101	Downstairs 101	1	1	2	DPT	DPT (AD)	1
3	253		1	1	DDP1	DPT(D-DPT)	No Connection	1
4	204		1	1	DDP2	DPT(D-DPT)	No Connection	1
5	110	Cordless	1	2	1	BLT	UNKNOWN	1
6	111	Fax	1	2	2	BLT	UNKNOWN	1
7	112	ALARM???	1	2	3	BLT	UNKNOWN	1
8	113	EPTRGS???	1	2	4	BLT	UNKNOWN	1
9	102	Nelson 102	1	2	1	DPT	DPT (AD)	1
10	103	Cameron 103	1	2	2	DPT	DPT (AD)	1
11	104	Simon 104	1	2	3	DPT	DPT (AD)	1
12	105	Kitchen 105	1	2	4	DPT	DPT (AD)	1
13	106	Bench 106	1	2	5	DPT	DPT (AD)	1
14	107	Nick 107	1	2	6	DPT	DPT (AD)	1

Similarly selecting 4. Flexible Button will allow addition or reconfiguration of buttons. Note that each extension has it's own button pattern, patterns once set can be copied to other extensions.



New Labels can be printed by accessing the TCS website [www.telcoms.com.au](http://www.telcoms.com.au) select Panasonic Support and downloading the appropriate label proforma. Userguides can be found there as well.

Once changes are completed and applied click on the disk symbol at the top right of the browser window to save the changes to the phone system memory.