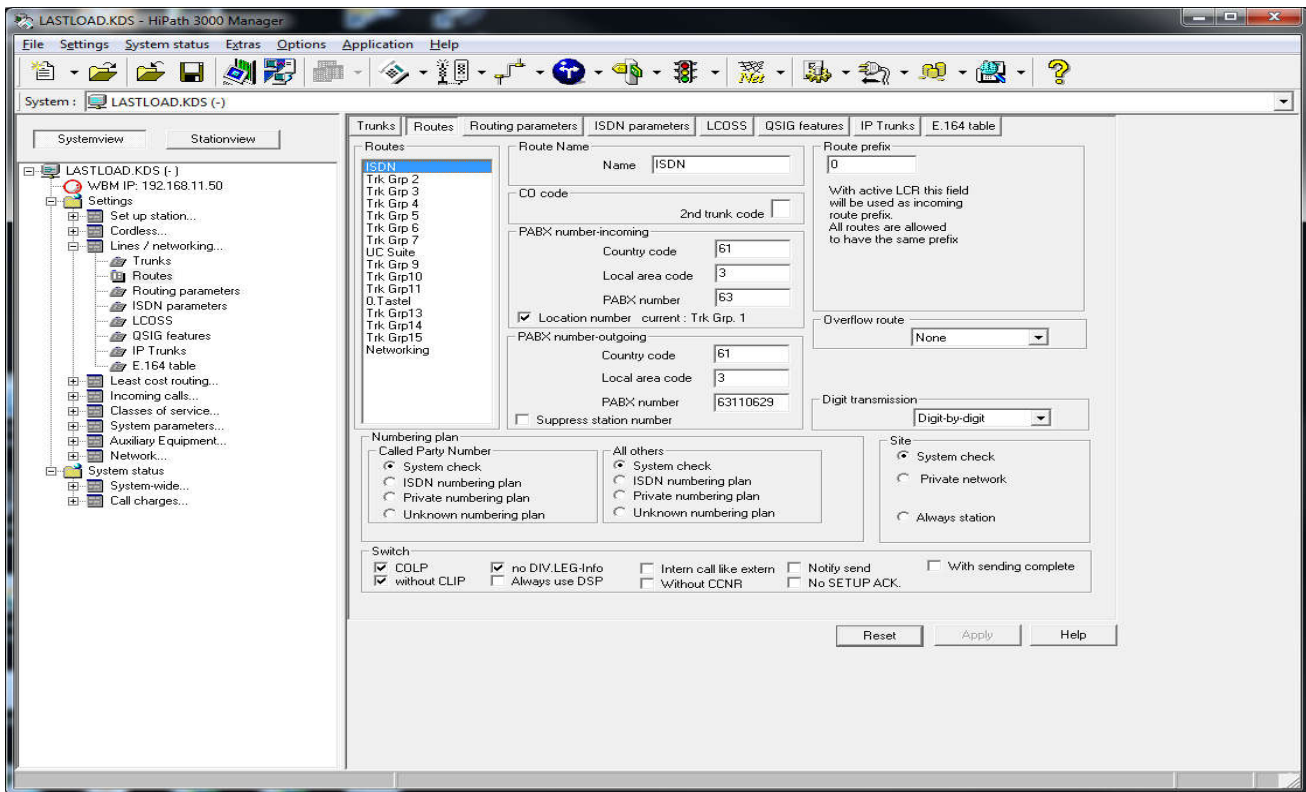


Siemens Fix for Telstra IP-ISDN service.

In **Lines/Networking Routes**, make sure the PBX Number incoming is set (TO 3) as per the screenshot. Note the PABX number may vary. If the Local Area code is not set incoming calls will fail.



In **Routing Parameters** make sure that **No, and type, outgoing** is set to **PABX Number**.

